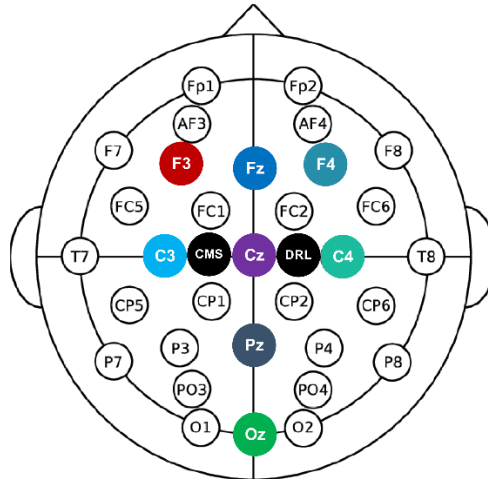


## EEG data information:

EEG Recorder: OPEN BCI - 8 channel

EEG Layout:



## Channel Info

1. Channel 1- Fz = column 2
2. Channel 2- Cz = column 3
3. Channel 3- Pz = column 4
4. Channel 4- Oz = column 5
5. Channel 5- F3 = column 6
6. Channel 6- C3 = column 7
7. Channel 7- F4 = column 8
8. Channel 8- C4 = column 9

## Marker:

Channel 10 = Brake light activation (Active =1; released = 0)

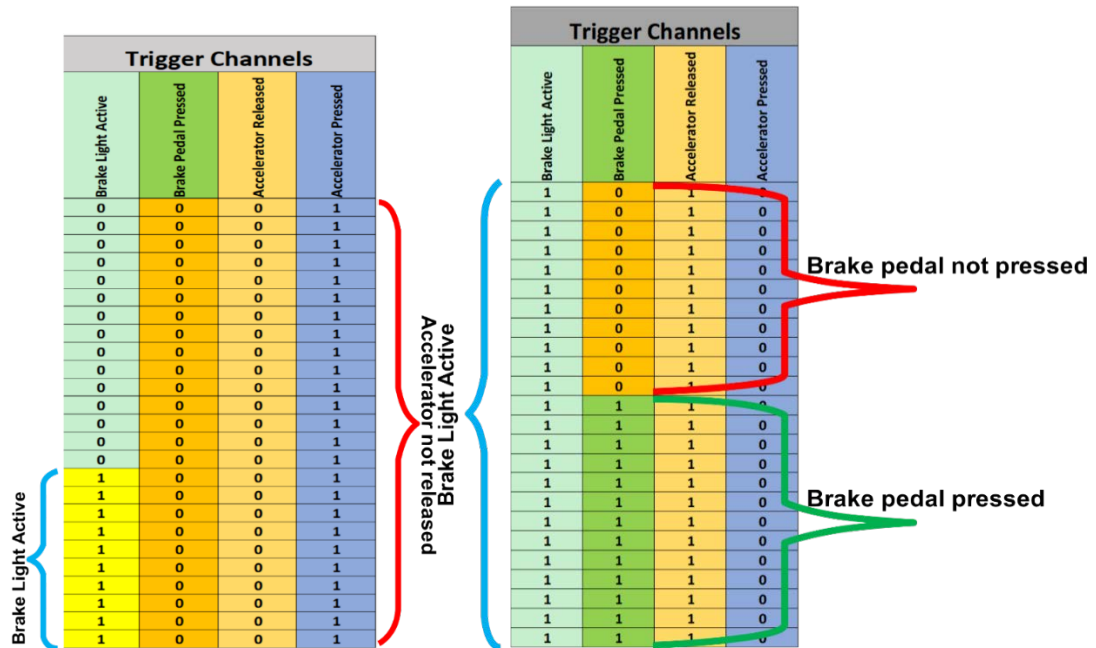
Channel 11 = Brake pedal pressed (Active =1; released = 0)

Channel 12 = accelerator released (Active =1; released = 0)

Channel 13 = accelerator pressed - Also start time for the experiment ( Active =1; released = 0)

Channel 14 = not used = always Zero

## Trigger channels for OPEN BCI



## Trigger channel identification in EEG data file

### Participant Details

Participant	Age	Participant	Age
P1	28	P11	21
P2	30	P12	21
P3	25	P13	22
P4	36	P14	21
P5	39	P15	34
P6	29	P16	22
P7	32	P17	28
P8	33	P18	21
P9	26	P19	26
P10	37	P20	20
P11	29	P22	22